

Power Feed Monitoring System

Sea Reach
Systems

Replaces failing and obsolete power feed management systems with a modern, high reliability, easy to use solution that integrates with your network operations.

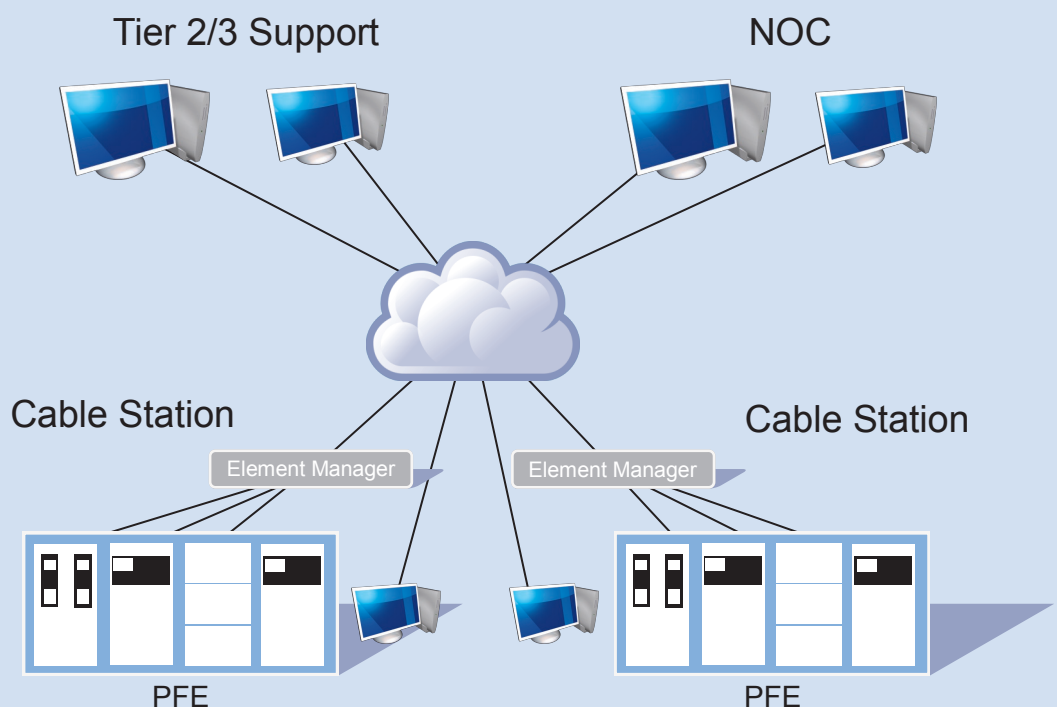
The economic life of subsea cable systems is increasing as upgrade technologies provide greater capacity without increasing O&M costs. The power feed equipment remains in place across upgrades but the manufacturer's monitoring system, invariably based on COTS hardware, suffers failures, obsolescence of parts and poor support. Sea Reach Systems' Power Feed Monitoring System is a proven, low cost replacement.

The simple and intuitive user interface allows even occasional users to quickly understand the state of powering. As the monitoring system is unaffected by transmission equipment upgrades, the user interface remains consistent and familiar even across different power feed equipment types. Re-training is minimised and response times improved.

PFE alarms are forwarded to your alarm manager/concentrator or to individual personal or groups by SMS, email etc.

Purpose built Element Managers are deployed to each PFE. A virtually unlimited number of operators can then access the status of any PFE in the network from any PC workstation using Windows® based client application software.

Alarms are forwarded via the management network to an existing centralised alarm reporting system or to gateways for email and/or SMS alerts.



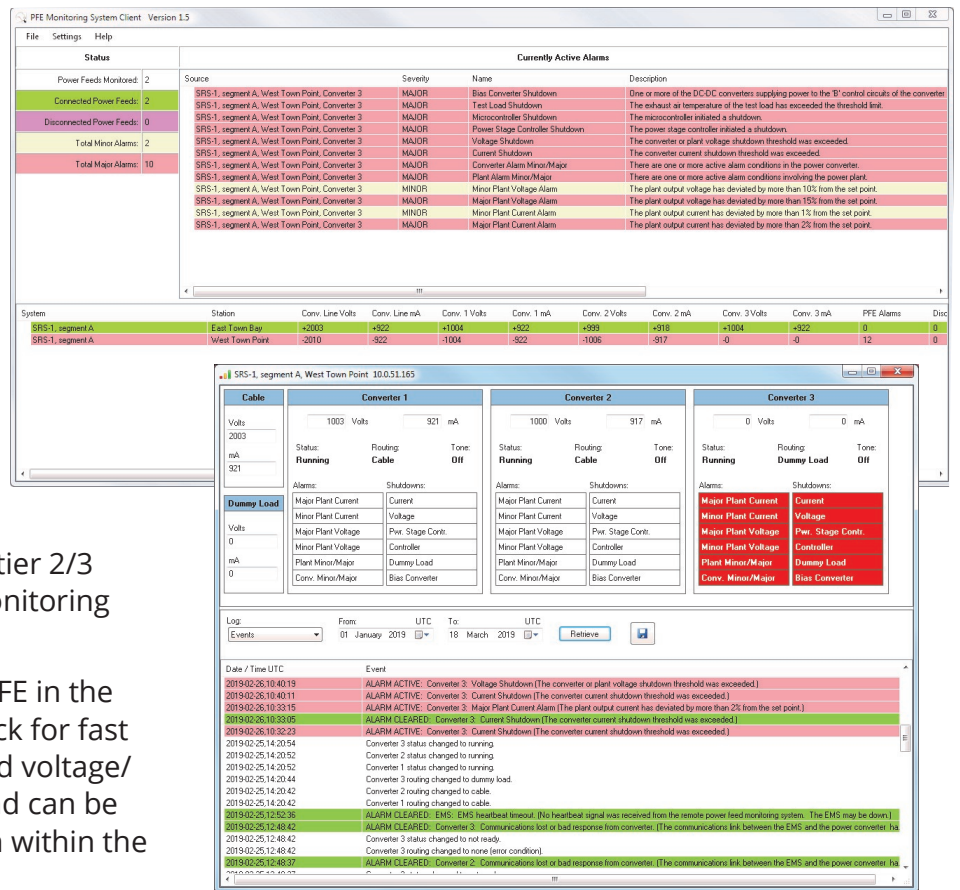
An unlimited number of operator positions can be implemented using any Windows® PC as a workstation. Station, NOC and support staff can all have access, with no additional capital investment in hardware.

The simple and intuitive user interface, consistent across PFE types, improves response times allowing the operator to quickly assess the state of the PFE. Even occasional users such as tier 2/3 support staff can fully exploit the monitoring functions with minimal training.

An overview of the status of all the PFE in the network can be recoded with one click for fast reporting to stake holders. Event and voltage/current logs are kept for each PFE and can be easily retrieved and graphed all from within the client application software.

Alarms generated by the PFE are forwarded as required to your alarm management system or to individual staff or groups.

Logs are created and stored on the element manager. Each unit is monitored and backed up by the unit at the remote cable station eliminating the possibility of data loss or silent failures.



Optional discrete alarm surveillance unit takes inputs from your other station equipment such as building management, generator plant etc.

Ongoing warranty, support, customisation and training are available to ensure your PFE management requirements are catered for long into the future.

Specifications

| | |
|----------------------------------------|-------------------------------------------------------------|
| Element Manager power | Dual redundant inputs, -18 to -75V DC, 40W max. |
| Maximum PFEs monitored | Virtually unlimited |
| Maximum operator positions | Virtually unlimited |
| Alarm forwarding | SNMP, syslog, TCP/UDP, email, SMS, etc. |
| Configuration | Switchable for minimal spares provisioning |
| Client application system requirements | Windows XP/7/8/10. |
| Element manager form factor | 19" / 23" rack mount |
| Network interface | 100Base-T, TCP/IP |
| Outputs | Dry contacts for minor and major alarms, audible and visual |
| Discrete alarm surveillance | Optional configurable discrete alarm input unit |



Sea Reach Systems Ltd.
 Basepoint Business Centre, Victoria Road, Dartford. DA1 5FS. United Kingdom.
 Tel. +44 (0)1322 518203
 Email. info@seareachsystems.com
 Web. http://www.seareachsystems.com
 Registered in England & Wales, company No. 08352172